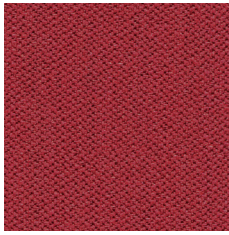
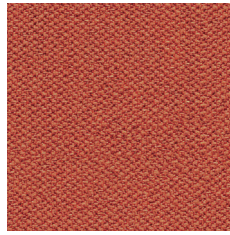


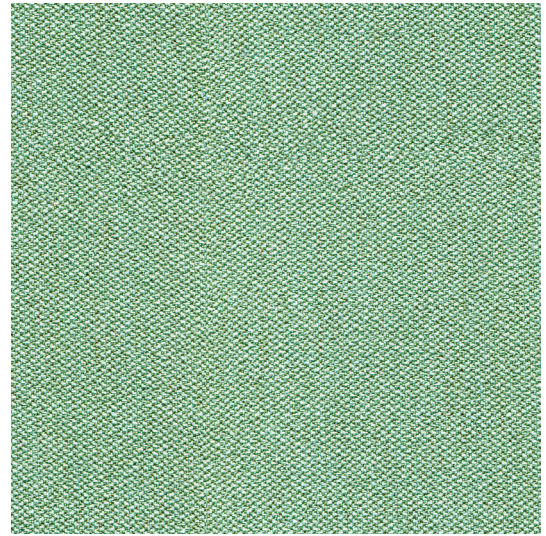
Cat. 1



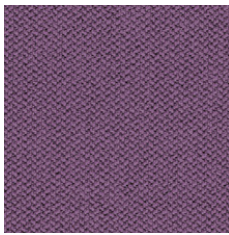
* CSE28 C28



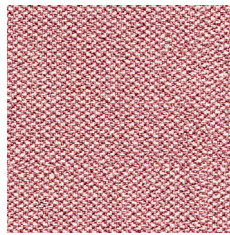
* CSE29 C29



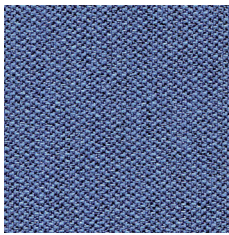
* CSE36 C36



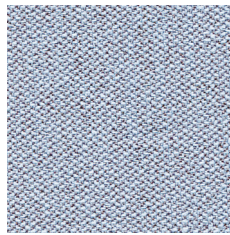
* CSE09 C09



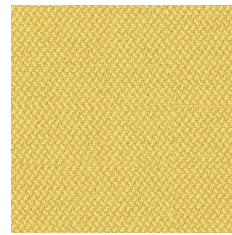
* CSE24 C24



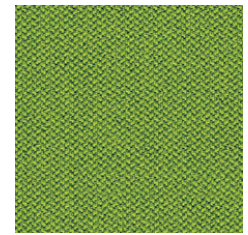
* CSE42 C42



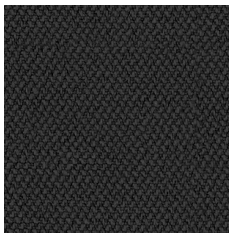
* CSE39 C39



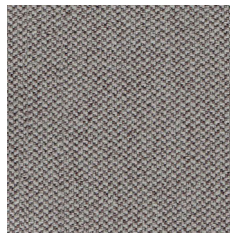
* CSE03 C03



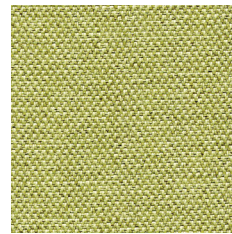
* CSE16 C16



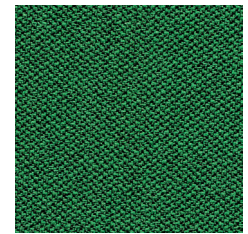
* CSE14 C14



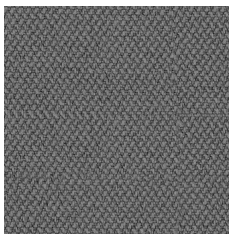
* CSE02 C02



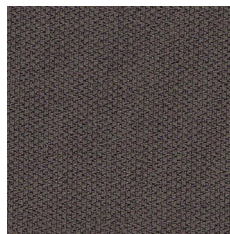
* CSE34 C34



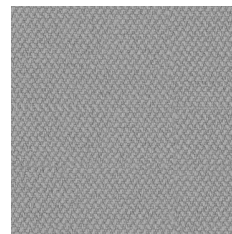
* CSE35 C35



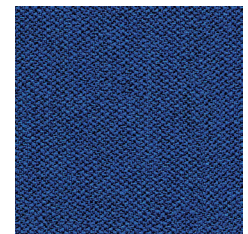
* CSE13 C13



* CSE21 C21



* CSE11 C11



* CSE40 C40



EN

Certified to OEKO-TEX® Standard 100

Certified to Indoor Advantage™ “Gold”

Non metallic dyestuffs

Composition

100% Polyester

Weight

320 g/m²

Abrasion resistance

100.000 Martindale cycles

Flammability

BS EN 1021-1 (cigarette)

BS EN 1021-2 (match)

BS 7176 Low Hazard

EN 13501-1, B-s1, d0 (adhered)

EN 13501-1, C-s1, d0 (wrapped rockwool)

CAL TB 117

Light fastness

5 (EN ISO 105-B02)

Fastness to rubbing

wet: 4; dry: 4 (ISO 105-X12)

FR

Certifié conforme à la norme
OEKO-TEX® 100

Certifié Indoor Advantage™ Gold

Colorants non métalliques

Composition

100% Polyester

Poids

320 g/m²

Résistance à l'abrasion

100.000 Cycles Martindale

Inflammabilité

BS EN 1021-1 (cigarette)

BS EN 1021-2 (allumette)

BS 7176 Low Hazard

EN 13501-1, B-s1, d0 (collé)

EN 13501-1, C-s1, d0 (recouvert
de laine de roche)

CAL TB 117

Stabilité à la lumière

5 (EN ISO 105-B02)

Résistance au frottement

humide: 4; sec: 4 (ISO 105-X12)

DE

Zertifiziert gemäß OEKO-TEX®
Standard 100

Zertifiziert gemäß Indoor Advantage™
„Gold“

Nichtmetallische Farbstoffe

Zusammensetzung

100% Polyester

Gewicht

320 g/m²

Abriebfestigkeit

100.000 Martindale-Zyklen

Entflammbarkeit

BS EN 1021-1 (Zigarette)

BS EN 1021-2 (Streichholz)

BS 7176 Low Hazard

EN 13501-1, B-s1, d0 (anhaftend)

EN 13501-1, C-s1, d0 (umwickelte
Mineralwolle)

CAL TB 117

Lichtgeschwindigkeit

5 (EN ISO 105-B02)

Reibechtheit

nass: 4; trocken: 4 (ISO 105-X12)

!

Batch to batch variations in shade may occur within commercial tolerances.

!

Des variations de teinte d'un lot à l'autre peuvent se produire dans le cadre des tolérances commerciales.

!

Innerhalb der handelsüblichen Toleranzen können Farbabweichungen von Charge zu Charge auftreten.