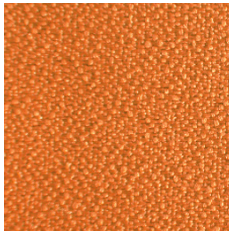
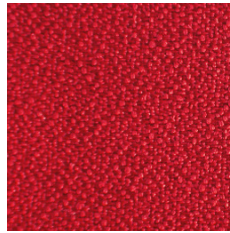


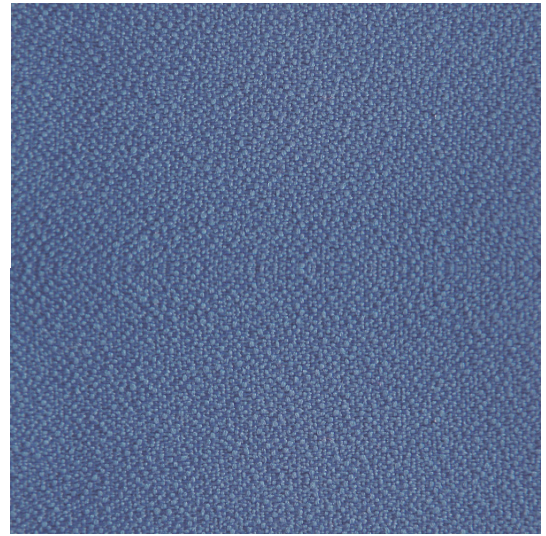
Cat. 1



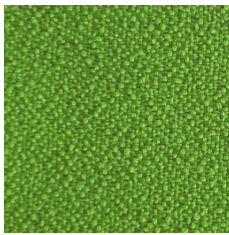
GE3



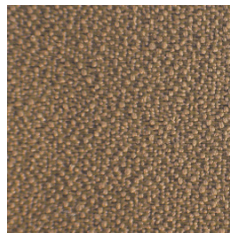
GF5



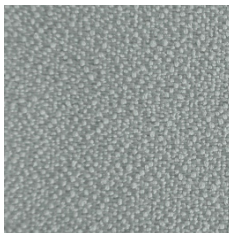
GF6



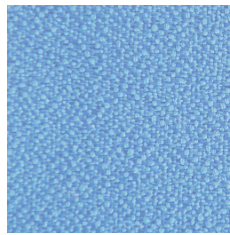
GE8



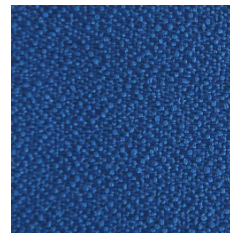
GE7



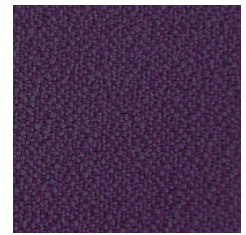
GE2



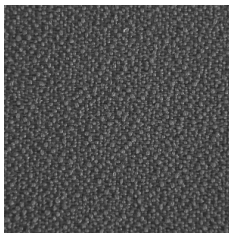
GE6



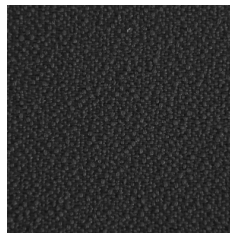
GE4



GE5



GE9



GE1

Bondai



EN

Certified to OEKO-TEX® Standard 100

Composition

100% Polyester

Weight

250 g/m²

Abrasion resistance

150.000 Martindale cycles

Flammability

BS EN 1021-1 (cigarette)
BS EN 1021-2 (match)
BS 5852: part 2 (Crib 5)
BS 7176 Medium Hazard
CAL TB 117
EN 13501-1, B-s1, d0 (adhered)
UNI 9175 & UNI 9175/FA1 Classe 1 IM

Light fastness

6 (EN ISO 105-B02)

Fastness to rubbing

wet: 5; dry: 5 (ISO 105-X12)

FR

Certifié conforme à la norme
OEKO-TEX® 100

Composition

100% Polyester

Poids

250 g/m²

Résistance à l'abrasion

150.000 Cycles de Martindale

Inflammabilité

BS EN 1021-1 (cigarette)
BS EN 1021-2 (allumette)
BS 5852: part 2 (Crib 5)
BS 7176 Medium Hazard
CAL TB 117
EN 13501-1, B-s1, d0 (collé)
UNI 9175 & UNI 9175/FA1 Classe 1 IM

Stabilité à la lumière

6 (EN ISO 105-B02)

Résistance au frottement

humide: 5; sec: 5 (ISO 105-X12)

DE

Zertifiziert gemäß OEKO-TEX®
Standard 100

Zusammensetzung

100% Polyester

Gewicht

250 g/m²

Abriebfestigkeit

150.000 Martindale-Zyklen

Entflammbarkeit

BS EN 1021-1 (Zigarette)
BS EN 1021-2 (Streichholz)
BS 5852: part 2 (Crib 5)
BS 7176 Medium Hazard
CAL TB 117
EN 13501-1, B-s1, d0 (anhaftend)
UNI 9175 & UNI 9175/FA1 Classe 1 IM

Lichtgeschwindigkeit

6 (EN ISO 105-B02)

Reibechtheit

nass: 5; trocken: 5 (ISO 105-X12)

!

Batch to batch variations in shade may occur within commercial tolerances.

!

Des variations de teinte d'un lot à l'autre peuvent se produire dans le cadre des tolérances commerciales.

!

Innerhalb der handelsüblichen Toleranzen können Farbabweichungen von Charge zu Charge auftreten.